



Apartment 1 The Market Place High Street
Cowbridge, CF71 7AH

Watts
& Morgan



Apartment 1 The Market Place High Street

Cowbridge, CF71 7AH

£400,000 Share of Freehold

1 Bedrooms | 1 Bathrooms | 1 Reception Rooms

This charming ground-floor apartment at The Marketplace combines the elegance of historic architecture with the luxury of modern living. Offering one spacious bedroom and a stylish bathroom, this unique apartment is the perfect blend of comfort and convenience.

The open-plan kitchen and living room area create a bright and welcoming space, ideal for both relaxing and entertaining. The kitchen is equipped with high-quality smart appliances, while the living area features ample space for comfortable seating and dining. With original stone walls and pointed medieval windows, the apartment retains the character of the Grade II listed building, providing a warm and inviting atmosphere.



Directions

Cowbridge Town Centre – 0.0 miles

Cardiff City Centre – 0.0 miles

M4 Motorway – 0.0 miles

Your local office: Cowbridge

T: 01446 773500

E: cowbridge@wattsandmorgan.co.uk



Summary of Accommodation

About The Property

Luxury 1-Bedroom Apartment at The Marketplace, Cowbridge

This stylish 1-bedroom apartment at The Marketplace in Cowbridge offers the perfect balance of modern living and historic charm. Located within a Grade II listed building, this apartment provides a sophisticated living experience in the heart of Cowbridge, with beautiful views of the town and surrounding countryside.

The open-plan living and dining area is bathed in natural light, courtesy of large medieval windows, creating a bright and inviting atmosphere. The contemporary kitchen is equipped with high-end smart appliances, offering a sleek space for preparing meals and entertaining.

The spacious bedroom features ample storage and is complemented by a well-appointed family bathroom with modern finishes.

One of the standout features of this apartment is its private courtyard garden, providing an intimate outdoor retreat ideal for relaxing, dining, or enjoying the fresh air in complete privacy.

Additionally, the apartment includes a designated private parking space within the development's secure courtyard, offering easy access to your home in the heart of Cowbridge.

With its charming blend of historic architecture and modern comforts, this 1-bedroom apartment offers the perfect opportunity to enjoy a luxury lifestyle in one of Cowbridge's most sought-after locations.



Garden & Grounds

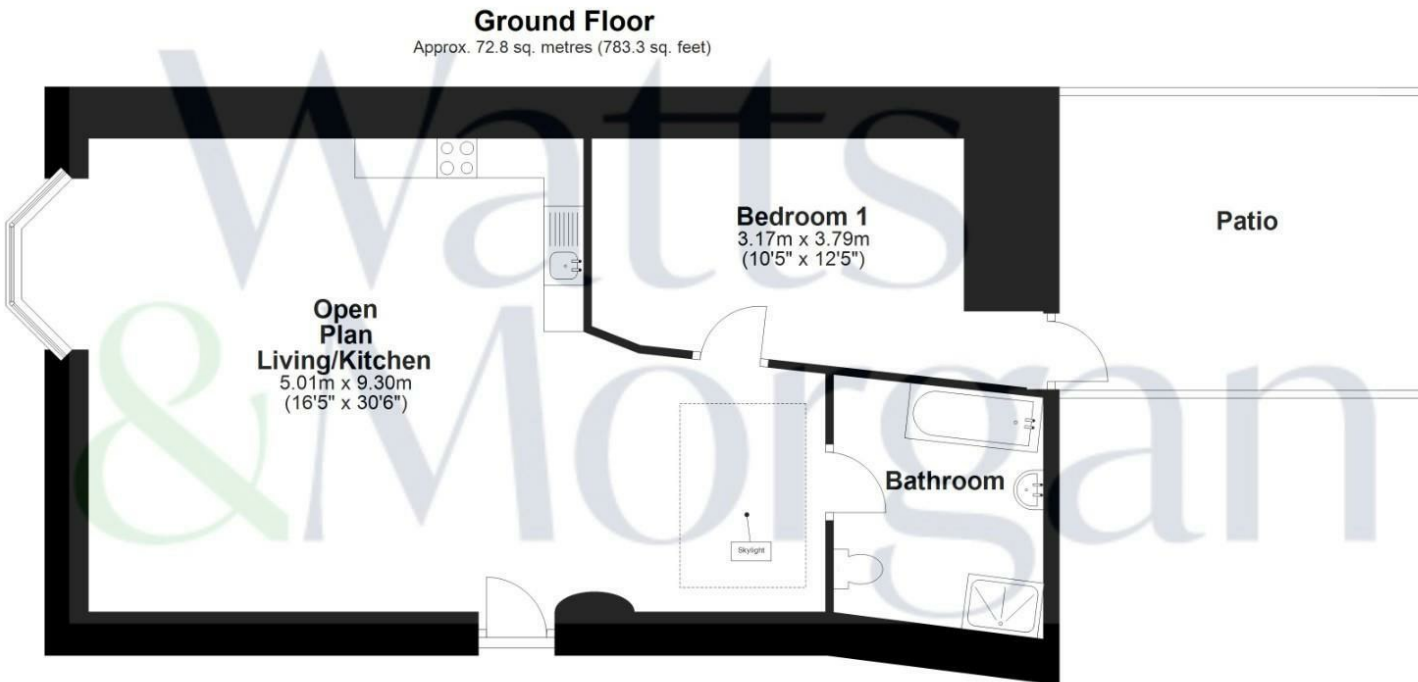
For added comfort, the apartment comes with its own private entrance, ensuring both privacy and ease of access.

Outside, enjoy your own private outdoor space, perfect for relaxing or entertaining in the fresh air. In addition, a designated private parking space within the development's courtyard adds further convenience to this unique and luxurious property.

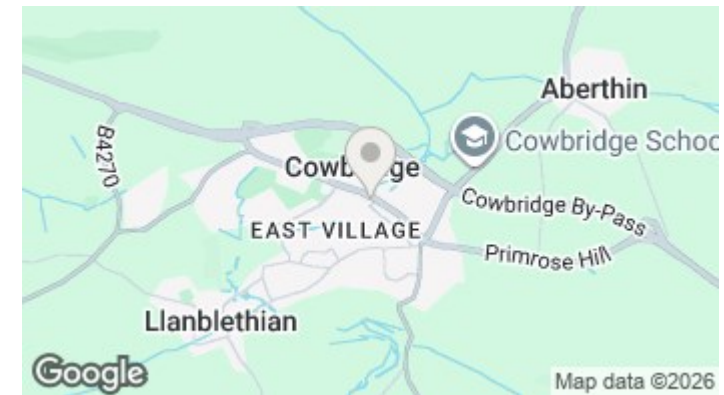
Located in the heart of Cowbridge, The Marketplace offers a peaceful and central setting, just moments from the vibrant high street, local shops, and eateries, making it the ideal home for those seeking a luxurious yet easy-to-maintain lifestyle.

Additional Information

All mains connected. Council Tax band tbc. Share of the freehold.



Total area: approx. 72.8 sq. metres (783.3 sq. feet)
Unit 1 , The Marketplace, Cowbridge



Energy Efficiency Rating		Current	Potential
Very energy efficient - lower running costs			
(92 plus)	A		
(81-91)	B		
(69-80)	C		
(55-68)	D		
(39-54)	E		
(21-38)	F		
(1-20)	G		
Not energy efficient - higher running costs			
England & Wales		EU Directive 2002/91/EC	



Any maps and floor plans included in these sales particulars are not accurate or drawn to scale and are intended only to help prospective purchasers visualise the layout of the property. They do not form any part of any contract.



Bridgend

T 01656 644 288
E bridgend@wattsandmorgan.co.uk

Cowbridge

T 01446 773 500
E cowbridge@wattsandmorgan.co.uk

Penarth

T 029 2071 2266
E penarth@wattsandmorgan.co.uk

London

T 020 7467 5330
E london@wattsandmorgan.co.uk

Follow us on



**Watts
& Morgan**